

Symbol - 11 MB Access Point

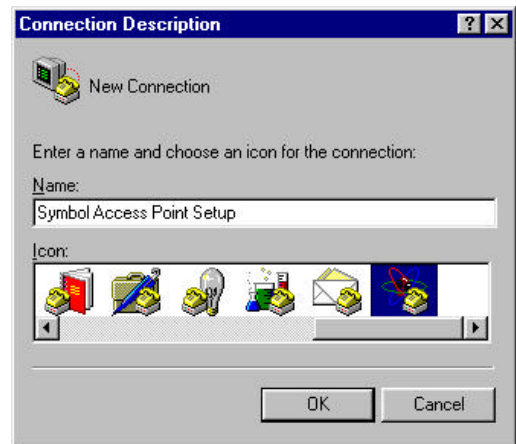
Demonstration Set-Up and Configuration

The intent of this procedure is two fold:

- To provide basic instructions for Symbol 11 MB Access Point Set-up and configuration.
- When used in combination with the Wireless Demo TCP/IP Addressing Requirements Questionnaire and Twin Client Setup Wizard, will provide sufficient information to configure and demonstrate the Apex III in most terminal emulation environments

The Symbol AP-4111 Access Point can be configured in a variety of ways. This procedure will concentrate on only one method, **a direct connection using a P.C. Serial Connection directly to the serial port on the Access Point.**

1. Create a direct connect session on your P.C. using HyperTerminal (or other communications program of your choice).
2. Press **START – ACCESSORIES – COMMUNICATIONS**
 - Click on the **HyperTerminal Folder**.
 - Click on the **HyperTerm Icon** to start up HyperTerminal.
3. You will see a Connection Description Screen like the one to the right.
 - Type in “**Symbol Access Point Setup**” in the Name box and select an Icon you like.
4. Click OK
5. The next dialog screen will be - **Connect To**.
 - Pull down the “**Connect Using**” menu
 - Select **Direct to COM1**.
 - Click OK.

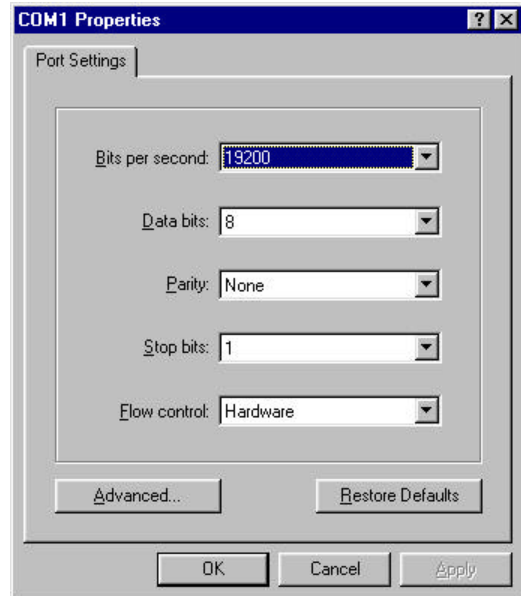


National Sales Office
2500 Port Malabar Blvd. NE
Palm Bay, FL 32905

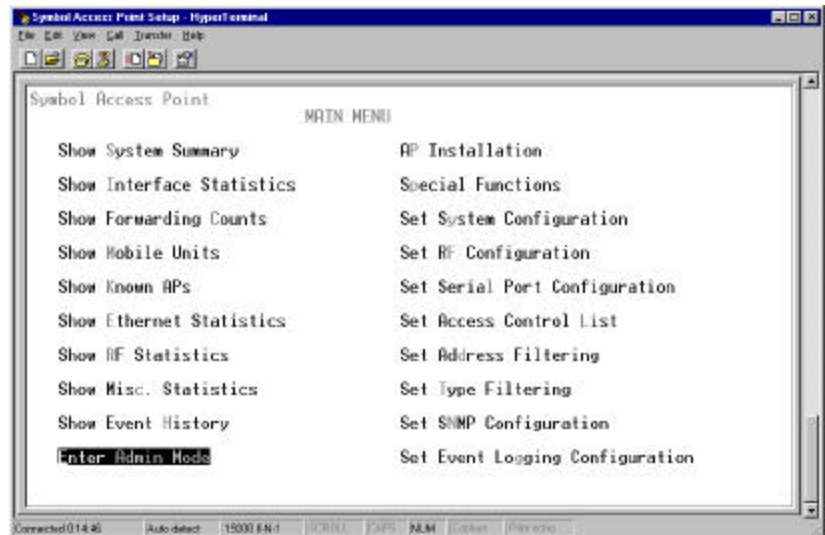
800-628-3888 – V
321-724-4321 – V
321-723-2895 – F
sales@compsee.com

Corporate Headquarters
400 N. Main St.
Mt. Gilead, NC 27306

6. The next screen will be - **COM1 Properties**.
 - Pull down the **Bits per Second** menu
 - Select - **19200**.
 - Click **OK**.
7. After Clicking OK in step 6 above you will return to the **Main HyperTerminal Screen** (a blank HyperTerminal Session).
 - Pull Down the **File Menu**
 - Select - **Save As**.
 - Change the Save In Box to **Windows/Desktop**
 - Depress - **Save**.
8. Now go to your **Windows Desktop** and depress **F5**. This will refresh your Desktop View. You should now see the Icon you selected in Step 3 above with the title **Symbol Access Point Shortcut**.



9. Make sure your Access Point 9 pin D serial port is connected to the serial port of your PC using a Null Modem Cable (Compsee Part Number **02SY939**).
10. Return to your **HyperTerminal Session**
 - Depress the **Escape Key** on your keyboard.
11. You should now see the **Symbol Access Point Main Menu**.
 - Depress **Shift A** on your PC Keyboard
 - This will tab down to the **Enter Admin Mode** Selection on the Main Menu
 - Depress **Enter**
12. “**Enter System Password**” will then be displayed in the lower left portion of the Main Menu.
 - Type in **Symbol**
 - Depress **Enter**.
(Please note - This **password** is **case-sensitive**.)
 - The **Enter Admin Mode** Selection will now read **Exit Admin Mode**. You will see no other screen changes.



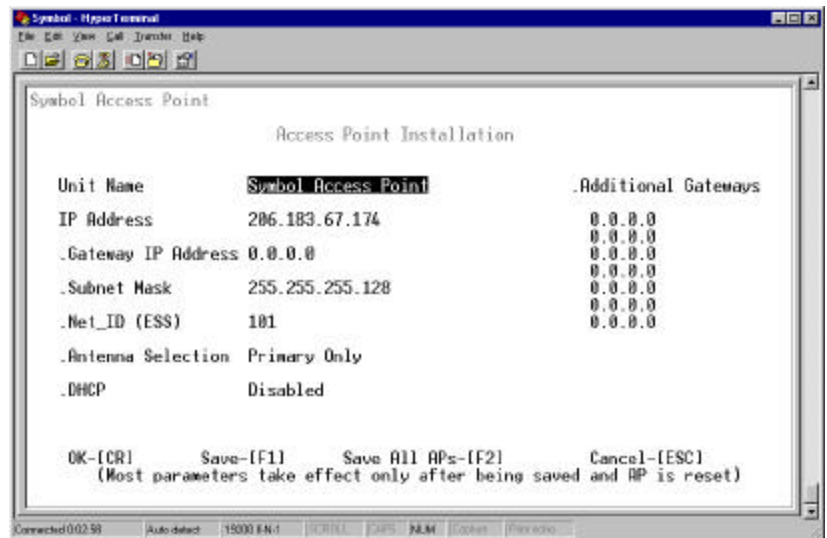
National Sales Office
2500 Port Malabar Blvd. NE
Palm Bay, FL 32905

800-628-3888 – V
321-724-4321 – V
321-723-2895 – F
sales@compsee.com

Corporate Headquarters
400 N. Main St.
Mt. Gilead, NC 27306

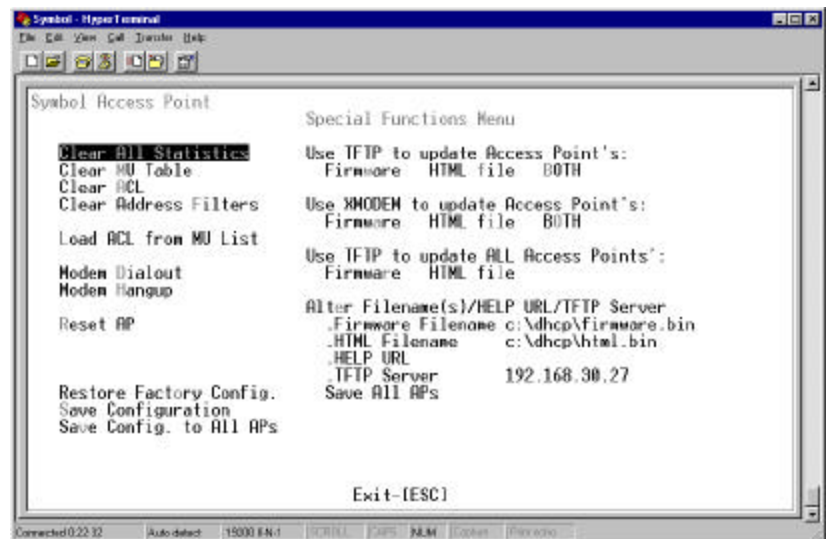
13. Depress **Shift P** on your PC Keyboard to tab to **AP Installation** selection.

- Depress the **Tab Key** on your PC keyboard once.
Fill in the Access Point I.P. Address information as indicated on the completed Wireless Demo TCP/IP Addressing Requirements Questionnaire.
- Depress **Tab** to advance to the **Gateway IP Address** Selection
Fill-in that information (only if applicable).
- Depress **Tab** to advance to the **Subnet Mask** Selection
Fill-in.
- Depress **Tab** to advance to the **Net_ID** Selection
Fill-in (only if a change is applicable).
- Depress **Tab** to advance to **Antenna Selection**
Depress the **Space Bar** to select **Primary Only**.
- Depress **Tab** to advance to the **DHCP** Selection.
Depress the **Space Bar** to Select **Disabled**.
- Depress **F1** to **Save** the Address Information. You will be prompted at the bottom-left of the screen **"Are You Sure?"**.
Depress **Y** for **yes**. You will then return to the **Access Point Main Menu**.



14. Depress **lower case p** to enter into the **Special Functions Menu**.

- Depress **Enter** to return to the **Special Functions Menu**.
- Depress **Upper Case S** to **save** the Configuration.
- Depress **Upper Case R** to **reset** the Access Point. The Access Point will reboot and you will be returned to the main menu (but no longer logged-into the Main Menu). You can now log-in again and verify that you correctly entered in all the address and set-up information correctly (if you wish).



National Sales Office
2500 Port Malabar Blvd. NE
Palm Bay, FL 32905

800-628-3888 – V
321-724-4321 – V
321-723-2895 – F
sales@compsee.com

Corporate Headquarters
400 N. Main St.
Mt. Gilead, NC 27306