

# Symbol - 2 MB Access Point

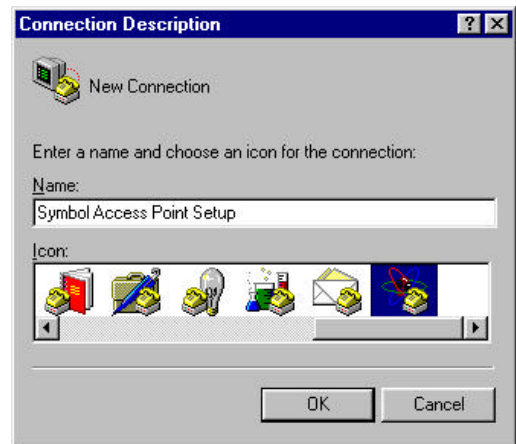
## Demonstration Set-Up and Configuration

The intent of this procedure is two fold:

- To provide basic instructions for Symbol 2 MB Access Point Set-up and Configuration.
- When used in combination with the Wireless Demo TCP/IP Addressing Requirements Questionnaire and Twin Client Setup Wizard, will provide sufficient information to configure and demonstrate the Apex III in most terminal emulation environments

The Symbol 4102 Access Point can be configured in a variety of ways. This procedure will concentrate on only one method, **a direct connection using a P.C. Serial Connection directly to the serial port on the Access Point.**

1. Create a direct connect session on your P.C. using HyperTerminal (or other communications program of your choice).
2. Press **START – ACCESSORIES – COMMUNICATIONS**
  - Click on the **HyperTerminal Folder**.
  - Click on the **HyperTerm Icon** to start up HyperTerminal.
3. You will see a **Connection Description Screen** like the one to the right.
  - Type in “**Symbol Access Point Setup**” in the Name box and select an Icon you like.
4. Click **OK**
5. The next dialog screen will be - **Connect To**.
  - Pull down the “**Connect Using**” menu
  - Select **Direct to COM1**.
  - Click **OK**.



**National Sales Office**  
2500 Port Malabar Blvd. NE  
Palm Bay, FL 32905

800-628-3888 – V  
321-724-4321 – V  
321-723-2895 – F  
[sales@compsee.com](mailto:sales@compsee.com)

**Corporate Headquarters**  
400 N. Main St.  
Mt. Gilead, NC 27306

6. The next screen will be - **COM1 Properties Screen.**

- Pull down the **Bits per Second** menu
- Select - **19200.**
- Click **OK.**

7. After Clicking OK in step 6 you will return to the **Main HyperTerminal Screen** (a blank HyperTerminal Session).

- Pull down the **File Menu**
- Select - **Save As.**
- Change the Save In Box to **Windows/Desktop**
- Depress **Save.**

8. Now go to your **Windows Desktop** and depress **F5.** This will refresh your Desktop View. You should now see the Icon you selected in Step 3 above with the title **Symbol Access Point Shortcut.**

9. Make sure your Access Point 9 pin D serial port is connected to the serial port of you PC using a Null Modem Cable (Compsee Part Number **02SY939**).

10. Return to your **HyperTerminal Session**

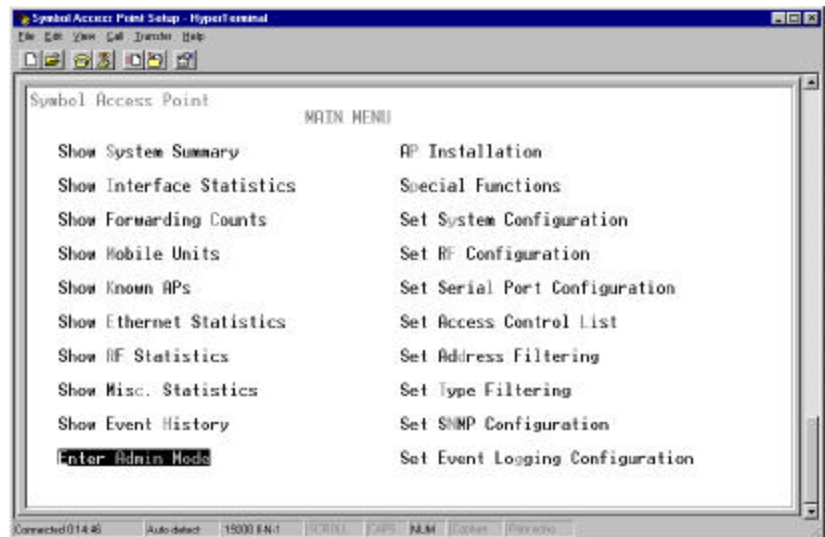
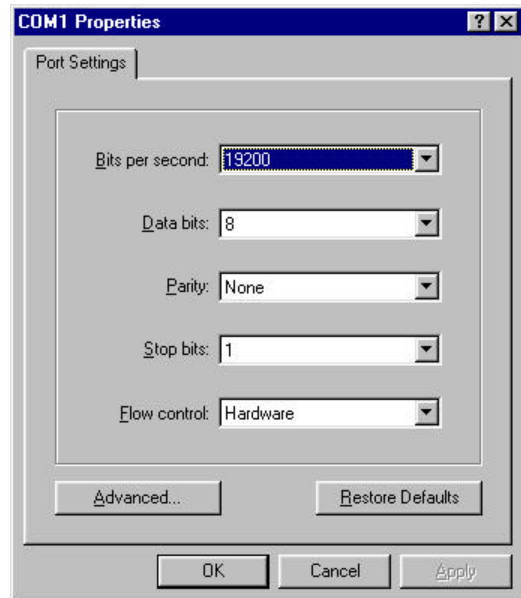
- Depress the **Escape Key** on your keyboard.

11. You should now see the **Symbol Access Point Main Menu.**

- Depress **Shift A** on your PC Keyboard
- This will tab down to the **Enter Admin Mode** Selection on the Main Menu
- Depress **Enter**

12. “**Enter System Password**” will then be displayed in the lower left portion of the Main Menu.

- Type in **Symbol**
- Depress **Enter.**
- (Please note - This **password is case-sensitive.**)
- The **Enter Admin Mode Selection** will now read **Exit Admin Mode.** You will see no other screen changes.



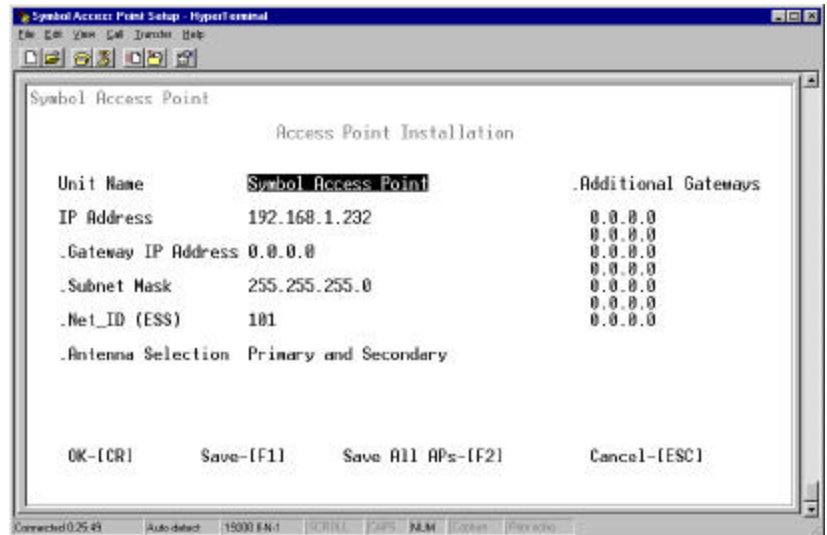
**National Sales Office**  
2500 Port Malabar Blvd. NE  
Palm Bay, FL 32905

800-628-3888 – V  
321-724-4321 – V  
321-723-2895 – F  
[sales@compsee.com](mailto:sales@compsee.com)

**Corporate Headquarters**  
400 N. Main St.  
Mt. Gilead, NC 27306

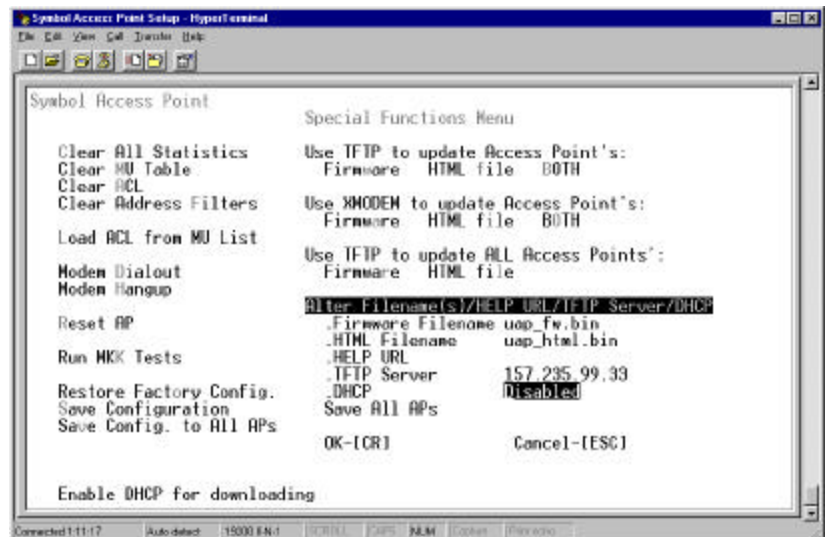
13. Depress **Shift P** on your PC Keyboard to tab to the AP Installation selection.

- Depress the **Tab Key** on your PC keyboard once.
- Fill in the Access Point I.P. Address information as indicated on the completed Wireless Demo TCP/IP Addressing Requirements Questionnaire.
- Depress **Tab** to advance to the **Gateway IP Address Selection**
- Fill-in that information (only if applicable).
- Depress **Tab** to advance to the **Subnet Mask Selection**
- Fill-in.
- Depress **Tab** to advance to the **Net\_ID Selection**
- Fill-in (only if a change is applicable).
- Depress **Tab** to advance to **Antenna Selection**
- Depress the **Space Bar** to select **Primary Only**.
- Depress **F1** to **Save** the Address Information. You will be prompted at the bottom-left of the screen "**Are You Sure?**". Depress **Y** for yes. You will then return to the Access Point Main Menu.



14. Depress **lower case p** to enter into the **Special Functions Menu**.

- Depress **lower case e** to enter into the **Alter Filename Selection**.
- Depress the **Tab Key** to move down to the **DHCP Selection**.
- Depress the **Space Bar** to change the selection to **Disable**.
- Depress **Enter** to return to the **Special Functions Menu**.
- Depress **Upper Case S** to **save** the Configuration.
- Depress **Upper Case R** to **reset** the Access Point. The Access Point will reboot and you will be returned to the main menu (but no longer logged-into the Main Menu). You can now log-in again and verify that you correctly entered in all the address and set-up information correctly (if you wish).



**National Sales Office**  
2500 Port Malabar Blvd. NE  
Palm Bay, FL 32905

800-628-3888 – V  
321-724-4321 – V  
321-723-2895 – F  
[sales@compsee.com](mailto:sales@compsee.com)

**Corporate Headquarters**  
400 N. Main St.  
Mt. Gilead, NC 27306