

Apex Program Generator

*Create custom scanning
applications without writing a
single line of program code.*



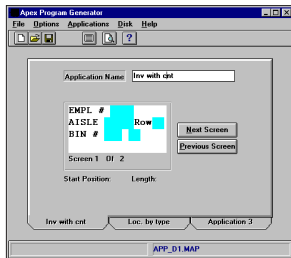
Compsee's Windows-based Program Generator puts programming in your hands, allowing you to visually create applications without having to write a single line of program code.

By responding to the menu-driven prompts regarding data collection, data validation and scanning features, the program generates structured BASIC code that can be used as is, or can be further modified and enhanced using a text editor. Even non-programmers will find the Apex Program Generator easy to use, with its user-friendly prompts, online help screen and WYSIWYG screens.

The Program Generator will prompt you for bar code types, for data types, and whether data is to be scanned or entered via the keyboard. It then produces an application program and loads it into the terminal. Application types can be simple data collection, asset tracking, inventory collection/tracking, or data base record keeping based on bar code items. And because programs are written in BASIC rather than script, they can be edited and enhanced if necessary.

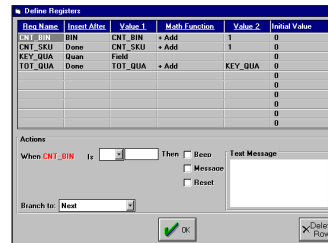
*The Program Generator supports
the development of new applications,
the modification of existing applications,
and can define up to three applications
in a single project file.*

Compsee's Apex Program Generator gives you the flexibility you need to keep performance levels high and costs low. It's easy to install, use and modify. The Apex Program Generator's existing applications are written in BASIC so they can be modified easily. You don't have to be a computer programmer to write custom applications either. And as with all of Compsee's high-quality line of bar code data collection products, the Apex Program Generator is durable, reliable and affordable.



SCREEN FORMAT ①

- Input prompts (defined by user)
- Register display (defined by user)
- Format on display
- Three applications programs in one project file

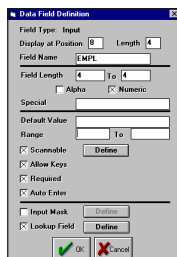


MATH REGISTER OPTIONS ⑤

- Mathematical calculation with conditional reset
- Conditional message display
- Conditional beep option
- Values assigned from field or file

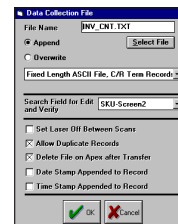
DATA FIELD DEFINITION ②

- Minimum/maximum length
- Alpha, numeric or alphanumeric data
- Special characters allowed within the data
- Default value
- Range check only or scan only
- Valid scan input (14 symbologies can be decoded and checked)
- Auto enter at the end of the data
- Data required or optional
- Input masking
- Check data locations for =, ≠, > or <



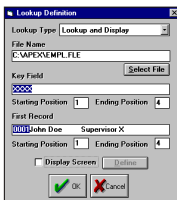
DATA FILE FORMAT ⑥

- Define file name and structure
- Fixed length ASCII
- Fixed length ASCII with carriage return
- Comma delimited fields
- Comma and quote delimited fields
- dBase III
- Microsoft Access (V.2.0)
- Append or overwrite
- Allow duplicate records
- Data and/or time stamp
- Delete or retain file after transfer



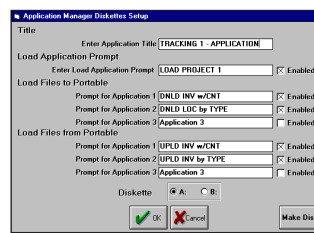
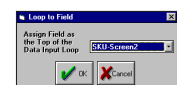
LOOK-UP DEFINITION ③

- File name
- Key field
- Record positioning
- Display option



PROGRAM FLOW DEFINITION ④

- Assign loop to field
- Test data for branching
- Data present or not present
- Data =, ≠, > or <
- Start character sequence



APPLICATION MANAGER ⑦

- Create application diskettes for distribution
- Updating the Apex operating system
- Loading programs and data files into the Apex
- Retrieving data files from the Apex
- Defining menu descriptions for each operation

SYSTEM REQUIREMENTS

Hardware..... 386 or greater PC,
4M RAM,
Hard drive with 5M
free space for program files,
3.5" 1.44M floppy disk drive.
Software DOS 3.3 or later,
Windows 3.1, Windows 95,
or Windows NT.



Post Office Box 1209 • Mt. Gilead, NC 27306

For sales information, call Toll-free 800.628.3888

Phone 407.724.4321 • Fax 407.723.2895 • e-mail sales@compsee.com • www.compsee.com

Apex IT™ is a trademark of Compsee, Inc. Windows is a registered trademark of Microsoft Corporation. Other products are trademarks or registered trademarks of their respective companies.



In a continuing effort to improve our products, Compsee, Inc. reserves the right to change specifications and features without prior notice