

Vertical Software Partner



Gary Briggs, P resident
gbriggs@bmisys.com

BMI Systems Group
2164 E. Broadway Road #250
Tempe, AZ 85282-1965

800-264-9949 – V
480-731-3127 – V
480-731-3129 – F
sales@bmisys.com
www.bmisys.com

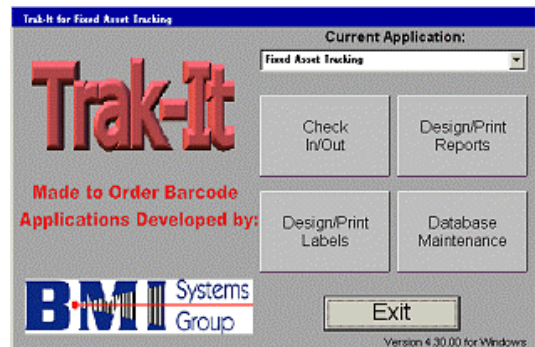
For over 15 years, BMI Systems Group has been a leader in developing and marketing some of the most innovative, reliable, and cost effective barcode based Inventory and Photo ID systems available today for the education and public sector marketplace.

BMI Systems Group specializes in implementing fixed asset tracking systems that integrate into leading edge public sector financial systems such as NCS Learn, Munis, SunGard Bi-Tech, SunGard Pentamotion and IDI to name a few. We have consultants on staff with over 25 years of experience in property control. BMI has also integrated most of the leading Photo ID card printing systems with popular student software packages such as NCS's SASIxp.

Trak-IT

BMI's premier standalone **Trak-It** applications are flexible tracking solutions that are useful in any situation in which item tracking is needed. Trak-It will improve accuracy, availability, and accountability in your business. Trak-It is fully customizable, including user defined fields and import & export functions that allow you to use your already existing data to its full potential.

- **Trak-It** can reserve items, check items in and out, move items, capture physical inventory, maintain an accurate inventory, and track transactions
- **Trak-It** incorporates a built-in PDT module that supports Compsee's Apex II and Apex III
- **Trak-It** has multiple security schemes and levels of access to system and application files
- **Trak-It** date and time stamps each item checked in or out
- **Trak-It** contains a transaction history database
- **Trak-It** has no record limits, and network versions are available for up to 50 concurrent users
- **Trak-It** contains a custom report wizard and an advanced report designer with multi-level math functions
- **Trak-It** can print to over 450 thermal transfer printers, as well as any Windows printer
- **Trak-It** can export and import data in many formats for easy transfer of data to and from other systems
- **Trak-It** allows for an unlimited number of items, users and locations & transactions
- **Trak-It** allows entry of data quickly via keyboard, keyboard wedge scanner or portable data collection unit
- **Trak-It** allows for parent/child relationship
- **Trak-It** contains over 80 data input fields for each record



Trak-IT Applications: Fixed Asset Tracking, Stockroom Inventory, Document (files), Textbooks, Hazardous Materials, Technology/Computers, Check-In/Check Out, etc.

Target Markets: Schools, Government, and the Private Sector

Compsee, Inc.
2500 Port Malabar Blvd.
Palm Bay, FL 32905
www.compsee.com



(800) 628-3888 – V
(321) 724-4321 – V
(321) 723-2895 – F
sales@compsee.com